

Exhibition 2026



In Focus

Hobart Photographic Society

Apr 23 - May 4, 2026

Sidespace Gallery
Salamanca Arts Centre

SAC

Hobart Photographic Society is excited to present the results of our adventures in the past year.

Whether exploring the rugged landscapes of Tasmania and beyond, the intimate world of insects and fungi, or experiencing the world from a different point of view, we enjoy challenging each other to do better in good company.

We are an eclectic mob with a wide range of skill and ability, and we are grabbing the chance to show off a little bit.

Come along and have a look at what we do - there's always room for one more!



Thanking our sponsors:





DM

11 The Flower Cake

Not for sale



DM

12 Three Hatted Apples

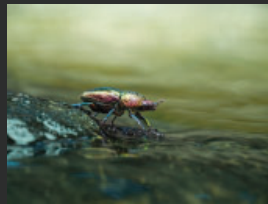
Not for sale



MG

13 Thistledown

\$300



RJ

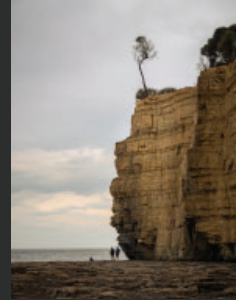
14 Beetle on river's edge

\$150

Catalogue

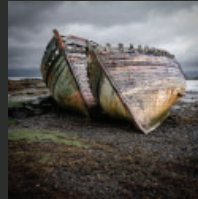
RJ

15 Big cliff
\$150



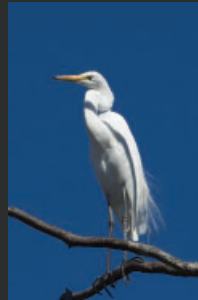
KC

16 Salen's Ships (Sailin' no more)
\$180



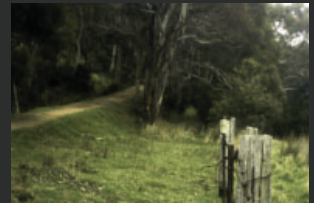
JiC

17 Great Egret
\$120



JG

18 Waterworks 2 (Pinhole)
Not for sale





PO

19 Fungus 1
\$150



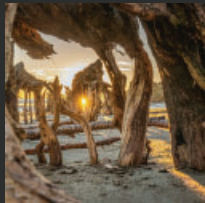
PO

20 Fungus 2
\$150



AN

21 Morning reflection
\$220



AN

22 Good morning sunshine!
\$220

SB

23 Mt Roland

Not for sale



SB

24 Fagus

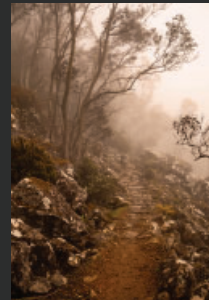
Not for sale



CA

25 Following the Path under the Organ Pipes

\$190



CA

26 Written on Water

\$160





DR

27 Grand Mosque Casablanca

Not for sale



DR

28 Flinders Granite

Not for sale



LiMo

29 Quiet Reflection

\$210



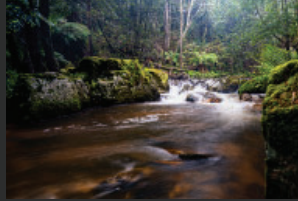
LiMo

30 Bicheno Sunrise

\$182

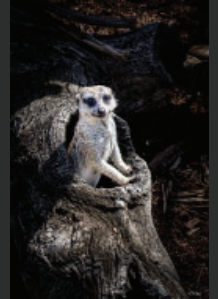
LyMo

31 Weld River
\$195



LyMo

32 The Distinguished Meerkat
\$220



AB

33 Ram
\$80



AB

34 Tyndall Highline
\$80





CC

35 Ice Heaven

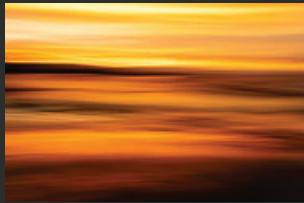
\$150



CC

36 Red Rebels/Toxic Salmon!

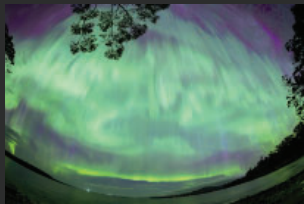
\$100



KM

37 Morning Light

\$182



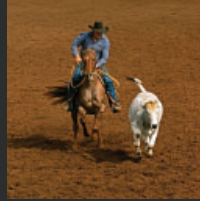
KM

38 Southern Lights

\$210

CS

39 Camp Drafting, Boonderoo Station, Qld.
\$200



CS

40 Lurking
\$200



IP

41 Truth and Light
\$80



IP

42 Camera Eye
\$60





JC

43 Coiled

\$200



JC

44 Salted

\$285



CT

45 Reflections on the Warrego River, NSW

\$200



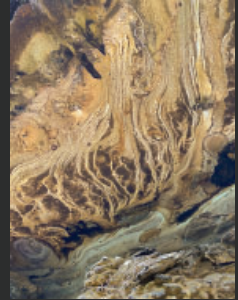
CT

46 Black Croc

\$200

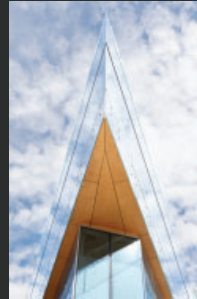
AR

47 All that ran
\$200



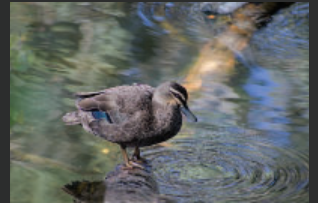
AR

48 Cirrocumulus
\$200



WW

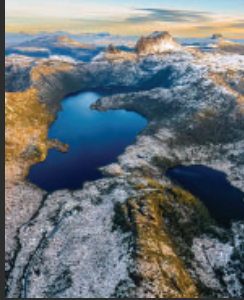
49 Out on a limb
\$150



WW

50 Move over
\$150





KD

51 Dove Lake
\$200



KD

52 Aurora Australis
\$200



BC

53 Monet in the Frame
Not for sale



JiC

54 Horseshoe Falls
\$120

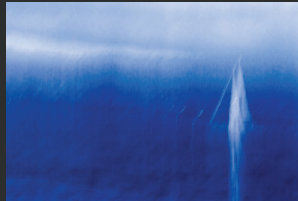
LiMe

55 Layers
\$295



LiMe

56 Sail Away
\$295



The Hobart Photographic Society is excited to present the results of our adventures in the past year.

Whether exploring the rugged landscapes of Tasmania and beyond, the intimate world of insects and fungi, or experiencing the world from a different point of view, we enjoy challenging each other to do better in good company.

We are an eclectic mob with a wide range of skill and ability, and we are grabbing the chance to show off a little bit.

Come along and have a look at what we do - there's always room for one more!



In Focus

Hobart Photographic Society

Apr 23 - May 4, 2026

Sidespace Gallery
Salamanca Arts Centre

Join us



- Monthly Meetings
- Photos in the Pub
- Private Facebook Groups
- Photographic Excursions
- Photographic Workshops
- Portrait Interest Group
- Member Discounts
- Annual Exhibition
- Exclusive Events

Exhibition 2026

Thanking our sponsors:



SAC

